

HEAT PUMPS



HEATING AND COOLING SOLUTIONS

SPLIT SYSTEMS

WALL MOUNTED | FLOOR STANDING | CEILING CONCEALED



MITSUBISHI HEAVY INDUSTRIES

Mitsubishi Heavy Industries is a leading supplier of premium residential and commercial air conditioning and heat pump systems. Delivering engineering excellence for over 130 years, the Mitsubishi Heavy Industries brand is instantly recognisable for quality and technological advancement.

With innovation central to both the organisation and the development of air conditioning systems, Mitsubishi Heavy Industries carries a strong philosophy of engineering products that are designed to improve the lives of those who use them and, at the same time, create a sustainable future for our company and the world we live in.



CONTENTS

Introduction	2
Contents	3
Committed to Quality	4-8
Wall Mounted Systems	9-17
Floor Standing Systems	18-19
Ceiling Concealed Systems	20-21
Control Options	22-23
Features and Functions	24-25
Product Specifications	26-33
Room Sizing Chart	34
Notes	35



COMMITTED TO QUALITY

Standing behind the quality of our products, is our commitment to our customers and our after sales service guarantees. Along with the rigorous quality assurance testing carried out on all Mitsubishi Heavy Industries products, comprehensive warranties provide you with a peace of mind and carry our commitment to quality.



5 YEARS PARTS AND LABOUR WARRANTY

Mitsubishi Heavy Industries Air-Conditioners Australia focuses solely on manufacturing high performance air-conditioners for the Australian and New Zealand market. All our split systems are of the highest quality and are backed by a full 5 year parts and labour warranty.



EXCEEDING ENERGY PERFORMANCE STANDARDS

To comply with New Zealand standards and deliver the most efficient solutions possible to our customers, all Mitsubishi Heavy Industries split systems meet and exceed the Minimum Energy Performance Standards (MEPS).

IMPROVED HEAT EXCHANGER

Our new and improved heat exchanger, with a unique 'M' shape design, has been developed to improve refrigerant distribution and increase the systems effectiveness. The new design features a larger heat exchange area, boosting the unit's overall efficiency.

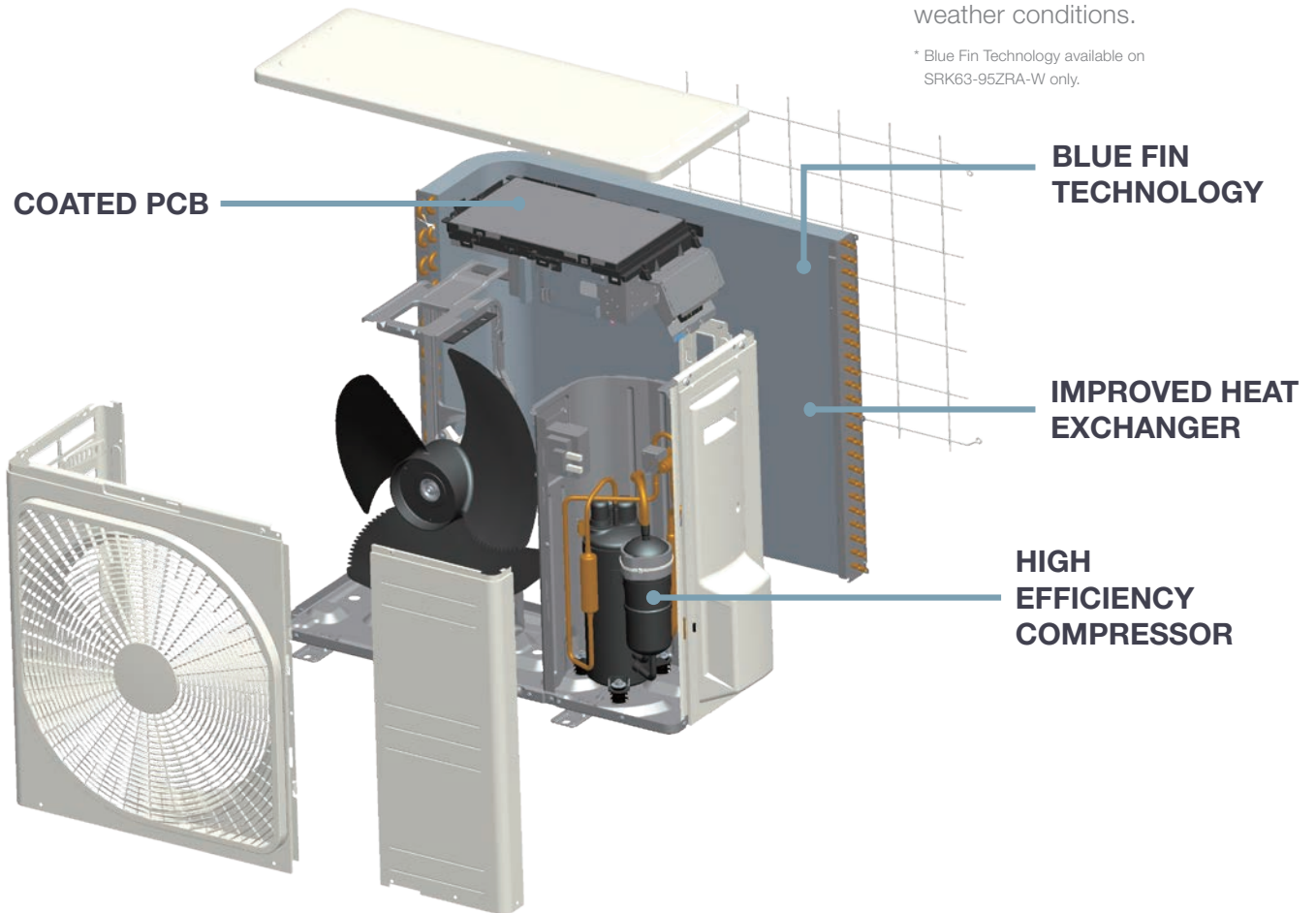
COATED PCB

To protect against humid weather a protective coating is applied to the circuit board in the outdoor unit, allowing it to withstand Australia's varying weather conditions and ensure the longevity of your Mitsubishi Heavy Industries system.

BLUE FIN TECHNOLOGY

Along with a new, efficient design, the heat exchanger in Mitsubishi Heavy Industries outdoor units are coated with specially formulated layers that assist in preventing the hydrophilicity effect and also assists in reducing the corrosion rate of the aluminium section from harsh Australian weather conditions.

* Blue Fin Technology available on SRK63-95ZRA-W only.



HIGH EFFICIENCY COMPRESSOR

One of the key features that provides Mitsubishi Heavy Industries range of heat pumps with its powerful performance is our highly efficient compressor. Combined with a Neodymium Motor that uses powerful, rare earth magnets, Mitsubishi Heavy Industries heat pumps can deliver a higher motor efficiency while producing much less operational noise.

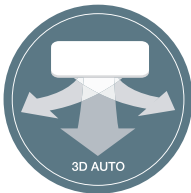
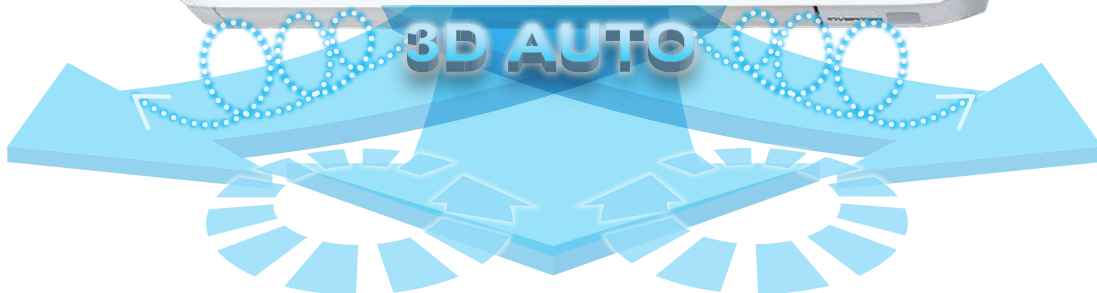
DC PAM INVERTER

The PAM control used in Mitsubishi Heavy Industries heat pumps helps minimise the loss of electricity and boost the efficiency by allowing the unit to reach the temperature quickly before slowing down the compressor. This allows the unit to save energy while maintaining a comfortable temperature in the room.

WIDE OPERATION RANGE

With our advanced technology and high quality components, Mitsubishi Heavy Industries heat pumps can operate in ambient outdoor temperatures as low as -20°C in heating mode and as high as +46°C in cooling mode.

This permits the installation in areas where the temperature conditions can be considered extreme.



3D AUTO AIRFLOW

This one touch program activates 3 independent motors to evenly distribute airflow, achieve economic operation and minimise energy loss with this uniform and quiet air flow.



DRY OPERATION

Reduces humidity in the room by removing moisture from the air without affecting the indoor temperature.



LED BRIGHTNESS ADJUSTMENT



Adjust the brightness of the LED display on the indoor unit to minimise disturbance during evenings. Perfect for units installed in bedrooms.



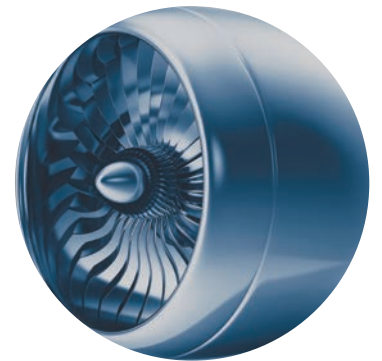
ECO OPERATION (AVANTI PLUS™)

The new Eco Operation of the Avanti PLUS™ series saves energy by automatically adjusting the set temperature based on the human activity detected in the room. If the motion sensor detects the room is unoccupied it will turn the unit to standby.



JET AIR TECHNOLOGY

CFD (computational fluid dynamics), used by jet engine manufacturers, has been applied to the fan blade design in our split systems, allowing them to deliver the most powerful and even air distribution whilst remaining economical to run.



R32 REFRIGERANT

All new Mitsubishi Heavy Industries split system heat pumps feature the new R32 refrigerant. Due to its superior qualities, the R32 refrigerant requires less energy to achieve the desired temperature and has nearly a 70% lower Global Warming Potential when compared to the R410A refrigerant*.

*Sourced from HVAC&R Nation, an AIRAH publication, Issue November 2013 (www.airah.org.com.au)



IMPROVED ENERGY EFFICIENCY

Our new Avanti PLUS™ range has been awarded 'super efficiency' status with a 7 Star heating and cooling energy rating**

**7 Star Heating and cooling energy rating in SRK20ZSXA-W





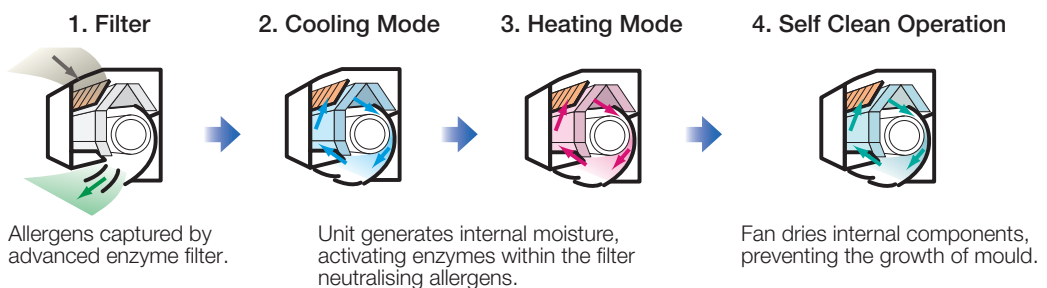
CLEAN AIR TECHNOLOGY

Delivering Odour and Allergen Free Air

Mitsubishi Heavy Industries Allergen Clear System removes airborne allergens such as pollen and dust by capturing them in a specially formulated Allergen Clear Filter and eliminating them via the multi-stage Allergen Clear Operation.

A photo-catalytic filter captures any remaining particles and neutralises odour causing bacteria before the Self Cleaning Mode dries the internal anti-microbial fan and internal components, ensuring fresh air on every start-up*

* Allergen Clear Operation and Self Clean Operation are two independent operations which can be activated on the remote control.



ALLERGEN CLEAR FILTER

Utilising the advanced Enzyme-urea compound the Allergen Clear Filter breaks down pollen, dust and allergens and deactivates bacteria including mould and viruses.





WALL MOUNTED SYSTEMS

Combining award winning European style with advanced Japanese engineering, our range of wall mounted split systems has recently expanded to include the new Avanti PLUS™ Platinum Series and Avanti® Cool Only models. Coming in a range of capacities and all with convenient and energy saving features, our wall mounted split systems have you covered.



SRK-ZMP SERIES

Designed for today's apartment living, the SRK-ZMP series combines a sleek and compact design with increased energy efficiency. Its 1.7kW capacity and compact design makes it perfect for small spaces such as spare bedrooms or home offices.

SRK-ZMP Series

REVERSE
CYCLE



SRK-ZMP Series		SRK17ZMP-S
Cooling Capacity	kW	1.7
Heating Capacity	kW	2.0
Energy label - Cooling	Stars	★★★★ (2.5)
Energy label - Heating	Stars	★★★★★ (4.0)

OTHER CONTROL OPTIONS
(sold separately)



4 STAR HEATING RATING

The SRK-ZMP Series boasts an impressive 4 Star heating rating ensuring that your unit operates efficiently during those colder seasons.



FUZZY AUTO MODE

Using fuzzy logic algorithms, the unit determines the operating mode, temperature settings and automatically adjusts the inverter frequency accordingly.



SMALLEST CAPACITY SIZE

As the smallest capacity size available, the SRK-ZMP Series is perfect for a small home office or spare bedroom where 2.0kW or 2.5kW unit is not required.

*For full functions please see page 24-25

*For alternate control options please see page 23



AVANTI®

AVANTI® SERIES

Created by the skilled hands of Italian Designers the Avanti® Series of heat pumps is best suited for small to medium sized living spaces. Utilizing the new R32 refrigerant the Avanti® Series perfectly combines stylish design and high quality Japanese Technical standards.

AVANTI® Series

REVERSE
CYCLE



AVANTI® Series		SRK20ZSA-W	SRK25ZSA-W	SRK35ZSA-W	SRK50ZSA-W
Cooling Capacity	kW	2.0	2.5	3.5	5.0
Heating Capacity	kW	2.7	3.2	3.7	5.8
Energy label - Cooling	Stars	★★★★★ (5)	★★★★★ (5)	★★★★ (4)	★★★ (2.5)
Energy label - Heating	Stars	★★★★★ (5)	★★★★★ (5)	★★★★★ (4.5)	★★★ (3)

AVANTI® COOL ONLY SERIES		SRK10YSA-W	SRK13YSA-W	SRK18YSA-W
Cooling Capacity	kW	2.5	3.5	5.0
Energy label - Cooling	Stars	★★★★★ (5)	★★★★ (4)	★★★ (2.5)

OTHER CONTROL OPTIONS
(sold separately)



ELEGANT AND TIMELESS DESIGN

Engineered by award winning, Italian designers TENSA, the Avanti® series of heat pumps features a modern design, allowing it to integrate seamlessly into any home interior.



HIGH POWER OPERATION

Select High Power Operation for 15mins of boosted power allowing you to quickly heat or cool your home before the unit returns to normal operation- perfect for when you first turn on the unit.



5 STAR COOLING RATING

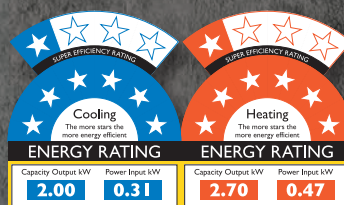
The improved design of the Avanti® Series has enhanced the overall energy efficiency of the unit. Aided by the inclusion of the new R32 refrigerant, the 2.0kW and 2.5kW systems feature an impressive 5 Star Cooling Rating.

*For full functions please see page 24-25
*For alternate control options please see page 23

AVANTI^{PLUS}[®]



PLATINUM
SERIES



AVANTI PLUS[®] PLATINUM SERIES

With an award winning, modern design and boasting industry leading energy ratings, the Avanti PLUS[®] series of wall mounted split systems is efficient as it is stylish. Incorporating a range of brand new energy saving and convenient features and functions and coming in a range of capacities the Avanti PLUS[®] Platinum Series is perfect for small and medium living spaces.

AVANTI PLUS™ Platinum Series

REVERSE
CYCLE



AVANTI PLUS™ PLATINUM Series		SRK20ZSXA-W	SRK25ZSXA-W	SRK35ZSXA-W	SRK50ZSXA-W	SRK60ZSXA-W
Cooling Capacity	kW	2.0	2.5	3.5	5.0	6.1
Heating Capacity	kW	2.7	3.2	4.3	6.0	6.8
Energy label - Cooling	Stars	★★★★★★★ (7)	★★★★★★ (6)	★★★★★ (4.5)	★★★★ (3.5)	★★★ (2.5)
Energy label - Heating	Stars	★★★★★★★ (7)	★★★★★★ (6)	★★★★★ (5)	★★★★ (4)	★★★ (3.5)

OTHER CONTROL OPTIONS
(sold separately)



AWARD WINNING DESIGN

Engineered by renowned, Italian industrial design firm TENSA, the Avanti PLUS™ boasts a sleek, sophisticated and modern design and was awarded the Silver A'Design Award in 2017.



INDUSTRY LEADING EFFICIENCY

Improvements in the internal component design, in combination with the use of the R32 refrigerant, has allowed the Avanti PLUS™ series to achieve impressive energy ratings, with the 2.0kW model boasting an industry leading 7 Star 'Super-Efficiency' rating for both heating and cooling - the highest rating currently available for heat pumps in Australia.



ENERGY SAVING MOTION SENSOR

The NEW motion sensor monitors activity levels within the room while the Eco operation will automatically adjust the set temperature accordingly. If no activity is detected for an extended period of time, the unit will turn off automatically, saving energy and minimising running costs.



*For full functions please see page 24-25

*For alternate control options please see page 23



BRONTE®



BRONTE® SERIES

Recommended by CHOICE®*, the Bronte® series is the ideal solution for heating and cooling of larger spaces within your home. Incorporating the same advanced fan blade technology used in the development of jet engines, the Bronte® series features a market leading long reach airflow allowing it to efficiently deliver a powerful yet quiet and evenly distributed airflow.

May 2018 CHOICE recommended models:
SRK63ZRA-W & SRK71ZRA-W

BRONTE® Series

REVERSE
CYCLE



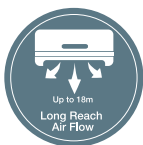
BRONTE® Series		SRK63ZRA-W	SRK71ZRA-W	SRK80ZRA-W	SRK95ZRA-W
Cooling Capacity	kW	6.3	7.1	8.0	9.5
Heating Capacity	kW	7.1	8.0	9.0	10.3
Energy label - Cooling	Stars	★★★★ (3)	★★★★ (3)	★★★ (2.5)	★★★ (2.5)
Energy label - Heating	Stars	★★★★★ (4)	★★★★ (3)	★★★★ (3)	★★★★ (3)

OTHER CONTROL OPTIONS
(Sold separately)



JET AIR TECHNOLOGY

Utilizing CFD (computational fluid dynamics), used by jet engine manufacturers, our engineers have designed the Bronte® fan blades to achieve the most powerful and efficient air delivery system possible, ensuring even air distribution whilst remaining efficient to run.



LONG REACH AIRFLOW

Jet Air Technology used as part of the design of the Bronte® Series enables a powerful airflow of up to 18m* and is ideal for large living areas.



SILENT OPERATION

Set periods of time where the unit will operate with reduced noise levels, perfect for night time and an uninterrupted sleep.

*For full functions please see page 24-25

*For alternate control options please see page 23

*18m airflow from 7.1kW in cooling conditions.



FLOOR STANDING SYSTEMS

Floor standing heat pumps are the perfect solution when wall space is at a premium. The indoor unit is installed close to the floor and can be placed under a window, semi-recessed into the wall or mounted in a convenient location.

SRF-ZMXA Series

REVERSE
CYCLE



SRF-ZMXA Series		SRF25ZMXA-S	SRF35ZMXA-S	SRF50ZMXA-S
Cooling Capacity	kW	2.5	3.5	5.0
Heating Capacity	kW	3.4	4.5	6.0
Energy label - Cooling	Stars	★★★★ (4)	★★★ (2.5)	★★★ (2.5)
Energy label - Heating	Stars	★★★★ (4)	★★★ (3)	★★★ (3)

OTHER CONTROL OPTIONS
(sold separately)



FUZZY AUTO MODE

Using fuzzy logic algorithms, the unit determines the operating mode, temperature settings and automatically adjusts the inverter frequency accordingly.



DRY OPERATION

Reduces humidity by removing moisture from the air without affecting the indoor temperature.



MEMORY LOUVRE

Set the louvre at the desired angle. The unit will automatically return the louvres to this position on every subsequent start up.

*For full functions please see page 24-25

*For alternate control options please see page 23

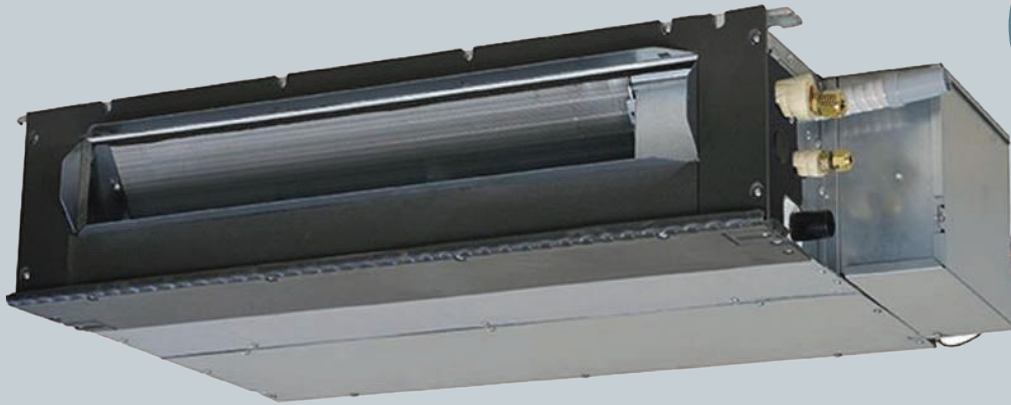


CEILING CONCEALED SYSTEMS

Our Ceiling Concealed systems are designed to sit entirely within your ceiling space and distribute air via discreet grilles. These units are perfect for renovated spaces as they can be factored in to the finished design to provide a quiet, efficient and integrated heating and cooling solution.

SRR-ZM Series

REVERSE
CYCLE



SRR-ZM Series		SRR25ZM-S	SRR35ZM-S
Cooling Capacity	kW	2.5	3.5
Heating Capacity	kW	3.4	4.2
Energy label - Cooling	Stars	★★★★ (3.5)	★★★ (2.5)
Energy label - Heating	Stars	★★★★★ (4)	★★★★★ (3.5)

OTHER CONTROL OPTIONS
(sold separately)



BUILT IN DRAIN PUMP

Capitalising on Mitsubishi Heavy Industries extensive experience in drain pump technology, the SRR-ZM-S Series features a built in condensate drain pump for easier installation.



FUZZY AUTO MODE

Using fuzzy logic algorithms, the unit determines the operating mode, temperature settings and automatically adjusts the inverter frequency accordingly.



SLIM, LOW-PROFILE DESIGN

With a slim, low-profile design that is only 200mm in height, this system is an excellent choice for apartment rooms or installations where ceiling spaces are limited and the indoor unit needs to be fitted in a concealed area.

*For full functions please see page 24-25
*For alternate control options please see page 23



CONTROL YOUR AIR. **YOUR WAY.**



WI-FI SOLUTION

The **SMART** way to control your MHI Heat pump from anywhere using your smartphone or tablet.



- Control your heat pump via your Google Home or Amazon smart device.
- Set up 'favourite' scenes and activate them with a single tap.
- Set your heat pump to respond to the weather, you arriving home, calendar events + more.
- Receive instant notifications and email updates and even create usage logs.

Compatible with:

IntesisHome® 



Google HOME

amazon
alexa



*via IFTTT application. Must be downloaded separately.

*Wi-Fi adaptor required see page 23

Control Options

Wired Remote Controls



RC-EX3A

Access extensive service and maintenance data with the easy to use, full dot, LCD back light display wired controller. Use the RC-EX3As touch screen to access, change or set all the functions and settings on your split system.



RC-E5

With easy to use functions and a clear LCD display, the RC-E5 controller enables extensive access to service, maintenance and technical data. Set temperatures, timers and run maintenance checks all through this easy to use wired controller.



RCH-E3

This simple and easy to use wired remote control allows you to set and control the minimum required functions including temperature, fan speed and operation mode. Adjust the settings quickly and easily by tapping on the control panel.

Wi-Fi Adaptors



MH-AC-WIFI-1

Compatible with almost all Mitsubishi Heavy Industries split systems, the new compact adaptor allows you to control your unit via your smartphone or tablet and can be easily installed within the unit.



IS-IR-WIFI-1

IS-IR-WIFI-1 Adaptor is a universal Wi-Fi Adaptor for all Mitsubishi Heavy Industries residential heat pumps

FEATURES AND FUNCTIONS

	FUNCTION	DESCRIPTION	SRK-ZMP	AVANTI	AVANTI PLUS	BRONTE	SRF-ZMXA	SRR-ZM
ENERGY SAVING	 Fuzzy Auto Mode	Using fuzzy logic algorithms, the unit determines the operating mode, temperature settings and automatically adjusts the inverter frequency accordingly.	●	●	●	●	●	●
	 Eco Operation (Avanti PLUS™)	Automatically adjusts the set temperature based on the human activity detected in the room by the motion sensor and switches the unit off when no activity is detected.			●			
	 Eco Operation	The unit operates at a slightly reduced capacity to reduce power consumption while maintaining a comfortable room temperature.	●	●		●	●	●
AIRFLOW	 Jet Air Technology	Advanced fan blade technology, utilised in the development of jet engines, efficiently delivers a powerful yet quiet and evenly distributed airflow.		●	●	●		
	 High Power Operation	Provides 15mins of boosted power allowing you to quickly heat or cool your home before returning to normal operation. Perfect for when you first turn on the unit.	●	●	●	●	●	●
	 3D Auto	Activates three independent motors which effectively and efficiently distributes an even airflow.		●	●	●		
	 Auto Louvre Mode	Depending on whether the unit is in heating or cooling mode this will automatically set the louvre at the optimum angle for even air distribution.	●	●	●	●	●	
	 Memory Louvre	Set the louvre at the desired angle. The unit will automatically return the louvres to this position on every subsequent start up.	●	●	●	●	●	
	 Up/Down Louvre Swing	The horizontal louvres will automatically swing up and down for even air distribution.	●	●	●	●	●	
	 Right/Left Louvre Swing	The vertical louvres will automatically swing left and right for even air distribution.		●	●	●	●	
	 Air Outlet Selection	Select whether the airflow is distributed via the upper outlet, the lower outlet or both.					●	
	 Positioning of Installation	Manually set the horizontal airflow direction to ensure even air distribution in situations where the indoor unit is installed in close proximity to a wall.		●	●	●		
	 Allergen Clear Operation	Multi-stage operation that activates enzymes in the specially designed filter, neutralising and suppressing airborne allergens such as pollen, dust and hair captured on the allergen filter.		●	●	●		
	 Self-Clean Operation	Dries the indoor unit components by running the fan on ultra-low mode, preventing the growth of mould. Designed to be run regularly after use.	●	●	●	●	●	●
	CLEAN AIR	 Photocatalytic Washable Deodorizing Filter	Easy to clean filter that catches airborne particles before neutralising the odour causing molecules within them.		●	●	●	●
 Allergen Filter		Captures airborne allergens such as hair, pollen and dust particles before neutralising them and any bacteria using specially formulated enzymes.		●	●	●		
 Removable Cover Panel		Removable front cover allowing access for easy cleaning and maintenance.	●	●	●	●	●	



FUNCTION		DESCRIPTION	SRK-ZMP	AVANTI	AVANTI PLUS	BRONTE	SRF-ZMXA	SRR-ZM
COMFORT & CONVENIENCE	Dry Operation	Reduces humidity by removing moisture from the air without effecting the indoor temperature.	●	●	●	●	●	●
	Silent Operation	Set periods of time where the unit will operate with reduced noise levels, perfect for night time and an uninterrupted sleep.		●	●	●	●	●
	Night Setback	Designed for the colder seasons, this function ensures the room temperature is kept at around 10°C, even while unoccupied.		●	●	●	●	●
	Comfort Start-up	When using the ON-TIMER function, the unit will switch on slightly earlier than the SET time, to ensure the optimum temperature is reached at the ON TIME.	●	●	●	●	●	●
	Weekly Timer	Set up to 4 timer operations a day (max 28 per week). Once set, the unit will turn on and off at the specified times of the day repeatedly.		●	●	●	●	●
	Sleep Timer	Set a pre-determined amount of time between 30 and 240 mins that your unit will operate for before switching off.	●	●	●	●	●	●
	On/Off Timer	Set your unit to turn on and off once, at specific times, within a 24 hour period. Unit will then turn on and off at the specified times every day.	●	●	●	●	●	●
	Preset Operation	The desired preset operation mode can be enabled with a single touch of a button.		●	●			
	Child Lock	Lock the remote control to prevent little ones from changing functions and other settings. Useful for families with curious young children.		●	●	●	●	●
	LED Brightness Adjustment	Adjust the brightness of the LED display on the indoor unit to minimise the disturbance of units installed in bedrooms.		●	●			
	Motion Sensor	Infrared motion detector that monitors activity within the room and saves energy by adjusting the temperature setting accordingly. Automatically switches the unit off after prolonged periods of no activity being detected.			●			
	Auto Operation	The unit will automatically select from heating, cooling or dry operation mode.	●	●	●	●	●	●
MAINTENANCE & PREVENTION FUNCTIONS	Microcomputer -Operated Defrosting	Automatically activated during low ambient temperatures to prevent the frosting of the outdoor heat exchanger.	●	●	●	●	●	●
	Self-Diagnostic Function	In the unlikely event of a fault the internal microcomputer automatically runs a diagnostic of the system. This enables a service agent to quickly isolate and repair any issues.	●	●	●	●	●	●
	Back-up Switch	If the remote control fails, the unit can be operated via an on/off switch on the indoor unit.	●	●	●	●	●	●
	Auto Restart Function	If there is a temporary loss of power, the unit will automatically restart in the same operating mode it was in when power is restored.	●	●	●	●	●	●



SPECIFICATIONS

PRODUCT SPECIFICATIONS

AVANTI® SERIES

Refrigerant Pipe Length				
Model	SRK20ZSA-W	SRK25ZSA-W	SRK35ZSA-W	SRK50ZSA-W
Maximum pipe length	20	20	20	25
Maximum height difference	10	10	10	15
O.D above I.D	m	m	m	m
O.D below I.D	m	m	m	m



SRK50ZSA-W



SRC20-35ZSA-W

SRKZSA-W	CAPACITY		2.0kW	2.5kW	3.5kW	5.0kW
Indoor			SRK20ZSA-W	SRK25ZSA-W	SRK35ZSA-W	SRK50ZSA-W
Outdoor			SRC20ZSA-W	SRC25ZSA-W	SRC35ZSA-W	SRC50ZSA-W
Power supply			1 Phase 220-240V 50Hz			
Capacity	Cooling T1	kW	2.0 (0.9~3.0)	2.5 (0.9~3.5)	3.5 (0.9~4.4)	5.0 (1.2~5.5)
	Heating H1		2.7 (1.0 ~4.2)	3.2 (0.9~5.2)	3.7 (0.9~5.4)	5.8 (1.2~6.6)
Input	Cooling T1	kW	0.41 (0.18~0.81)	0.51 (0.18~0.88)	0.82 (0.18~1.27)	1.39 (0.27~1.86)
	Heating H1		0.56 (0.20~1.12)	0.65 (0.21~1.43)	0.81 (0.21~1.44)	1.49 (0.26~1.97)
Max running current		A	9	9	9	14.5
Energy label	Cooling T1	Stars	★★★★★ (5)	★★★★★ (5)	★★★★★ (5)	★★★★★ (5)
	Heating H1		★★★★★ (5)	★★★★★ (5)	★★★★★ (5)	★★★★★ (5)
EER	Cooling T1		4.88	4.90	4.27	3.60
COOP	Heating H1		4.82	4.92	4.57	3.89
Sound power level (JIS C9612)	Cooling(Outdoor)	dB(A)	56	58	62	61
	Heating(Outdoor)		57	61	62	63
Sound pressure level (JIS C9612)	Cooling(Indoor)	dB(A)	35-27-22-19	40-31-22-19	43-34-27-19	43-36-28-22
	Heating(Indoor)		39-30-24-19	46-38-24-19	47-39-25-19	47-39-32-24
Silent mode sound pressure level	Cooling(Outdoor)	dB(A)	41	42	45	43
	Heating(Outdoor)		42	43	44	45
Airflow	Cooling(Indoor)	l/s	165~127-93-83	182-140-88-78	205-152-117-78	213-175-113-93
	Heating(Indoor)		190-142-108-93	237-182-110-88	250-193-117-88	253-198-152-113
External dimensions (HXWXD)	Indoor	mm	290x870x230			
	Outdoor		540x780(+62)x290			
Net weight	Indoor	kg	9.5	9	10	10
	Outdoor		33	36	36	43.5
Refrigerant piping	Liquid line	mm	Ø6.35			
	Gas line		Ø9.52			
	Connection method		Flare connection			
	Quantity	kg	0.58	0.75	0.75	1.05
Refrigerant R32	Attached length of piping	m	Liquid line : 0.54 / Gas line : 0.47			
	Pre charged to pipe length	m	15			
	Additional charge	gr/m	20			
	Maximum charge	kg	0.68	0.85	0.85	1.25
Standard accessories			Allergen Clear & Photocatalytic Washable Deodorizing Filter			
Optional parts			Interface kit (SC-BKN2-E) / Wi-Fi Kit			
Outdoor air temperature (upper, lower limits)	Cooling mode (approximately)	C	-15 to +46			
	Heating mode (approximately)	C	-15 to +24			

PRODUCT SPECIFICATIONS

AVANTI PLUS™ PLATINUM SERIES



SRC20-60ZSXA-W

Refrigerant Pipe Length					
Model	SRK20ZSXA-W	SRK25ZSXA-W	SRK35ZSXA-W	SRK50ZSXA-W	SRK60ZSXA-W
Maximum pipe length	25	25	25	30	30
Maximum height difference	15	15	15	20	20
	m	m	m	m	m
	O.D. above I.D.	O.D. above I.D.	O.D. above I.D.	O.D. above I.D.	O.D. above I.D.
	O.D. below I.D.	O.D. below I.D.	O.D. below I.D.	O.D. below I.D.	O.D. below I.D.

SRKZSXA-W	CAPACITY		2.0kW	2.5kW	3.5kW	5.0kW	6.0kW
Indoor			SRK20ZSXA-W	SRK25ZSXA-W	SRK35ZSXA-W	SRK50ZSXA-W	SRK60ZSXA-W
Outdoor			SRC20ZSXA-W	SRC25ZSXA-W	SRC35ZSXA-W	SRC50ZSXA-W	SRC60ZSXA-W
Power supply			1 Phase 220-240V/50Hz				
Capacity	Cooling T1	kW	2.0 (0.9-3.4)	2.5 (0.9-3.8)	3.5 (0.9-4.5)	5.0 (1.0-6.2)	6.1 (1.0-6.9)
	Heating H1	kW	2.7 (1.0-6.5)	3.2 (0.9-6.0)	4.3 (0.8-6.8)	6.0 (0.8-8.2)	6.8 (0.8-8.8)
Input	Cooling T1	kW	0.31 (0.18-0.76)	0.44 (0.16-0.91)	0.74 (0.16-1.27)	1.24 (0.19-1.90)	1.71 (0.19-2.50)
	Heating H1	A	0.47 (0.14-1.36)	0.69 (0.14-1.54)	0.90 (0.14-1.87)	1.36 (0.20-2.46)	1.65 (0.20-2.86)
Max running current			9	9	9	15	15
Energy label	Cooling T1	Stars	★★★★★ (7)	★★★★★ (6)	★★★★★ (4.5)	★★★★ (3.5)	★★★★ (2.5)
	Heating H1	Stars	★★★★★ (7)	★★★★★ (6)	★★★★★ (5)	★★★★ (4)	★★★★ (3.5)
EER	Cooling T1		6.45	5.68	4.73	4.03	3.67
CO2P	Heating H1		5.74	5.42	4.78	4.41	4.12
Sound power level (JIS C9612)	Cooling(Outdoor)	dB(A)	56	57	61	63	65
	Heating(Outdoor)	dB(A)	58	58	62	61	64
Sound pressure level (JIS C9612)	Cooling(Indoor)	dB(A)	38-31-24-19	39-33-25-19	43-35-26-19	44-39-31-22	48-41-33-22
	Heating(Indoor)	dB(A)	38-33-25-19	40-34-27-19	42-25-28-19	47-41-33-23	47-42-34-23
Silent mode sound pressure level	Cooling(Outdoor)	dB(A)	33	35	38	42	42
	Heating(Outdoor)	dB(A)	38	39	43	43	43
Airflow	Cooling(Indoor)	l/s	188-152-93-83	203-167-117-83	218-180-122-83	238-207-130-90	272-223-148-90
	Heating(Indoor)	l/s	203-172-120-90	213-163-130-90	232-197-143-90	268-238-163-103	297-228-182-103
External dimensions (HXWXD)	Indoor	mm	305X920X220				
	Outdoor	mm	640X800(+71)X290				
Net weight	Indoor	kg	13				
	Outdoor	kg	43				
Refrigerant piping	Liquid line	mm	Ø6.35				
	Gas line	mm	Ø9.52				
Connection method	Connection method		Flare connection				
	Quantity	kg	1.2				
Refrigerant R32	Attached length of piping	m	Liquid line : 0.55 / Gas line : 0.48				
	Pre charged to pipe length	m	15				
	Additional charge	gr/m	20				
	Maximum charge	kg	1.4				
Standard accessories			Allergen Clear & Photocatalytic Washable Deodorizing Filter				
Optional parts			Interface kit (SC-BIKN2-E) / Wi-Fi Kit				
Outdoor air temperature (upper, lower limits)	Cooling mode (approximately)	C	-15 to +46				
	Heating mode (approximately)	C	-20 to +24				

PRODUCT SPECIFICATIONS

BRONTE® SERIES



SRC95ZRA-W



SRC71-80ZRA-W



SRC63ZRA-W

Refrigerant Pipe Length

Model	SRK63ZRA-W	SRK71ZRA-W	SRK80ZRA-W	SRK95ZRA-W
Maximum pipe length	30	30	30	30
Maximum height difference	20	20	20	20
	m	m	m	m
	O.D above I.D			
	O.D below I.D			

SRKZRA-W	CAPACITY				6.3kW	7.1kW	8.0kW	9.5kW
Indoor					SRK63ZRA-W	SRK71ZRA-W	SRK80ZRA-W	SRK95ZRA-W
Outdoor					SFC63ZRA-W	SRC71ZRA-W	SRC80ZRA-W	SRC95ZRA-W
Power supply					1 Phase 220~240V 50Hz			
Capacity	Cooling T1				6.3 (1.2~7.4)	7.1 (2.3~8.3)	8.0 (2.3~9.5)	9.5 (2.5~10.6)
	Heating H1				7.1 (0.8~9.2)	8.0 (2.0~10.9)	9.0 (2.1~11.2)	10.3 (3.2~11.9)
Input	Cooling T1				1.58 (0.2~2.5)	1.84 (0.48~2.4)	2.22 (0.48~3.1)	2.56
	Heating H1				1.60 (0.16~2.8)	2.02 (0.4~3.4)	2.40 (0.40~3.40)	2.64
Max running current					14.5	17	17	17.5
Energy label	Cooling T1				★★★★ (3)	★★★★ (3)	★★★★ (2.5)	★★★★ (2.5)
	Heating H1				★★★★★ (4)	★★★★★ (3)	★★★★★ (3)	★★★★★ (3)
EER	Cooling T1				3.99	3.86	3.60	3.71
COP	Heating H1				4.44	3.96	3.75	3.9
Sound power level (JIS C9612)	Cooling(Outdoor)				64	65	68	69
	Heating(Outdoor)				66	63	66	70
Sound pressure level (JIS C9612)	Cooling(Indoor)				44-39-35-25	43-40-36-24	46-43-38-25	48-45-40-26
	Heating(Indoor)				44-38-34-28	46-39-35-28	47-41-36-29	48-42-37-29
Silent mode sound pressure level	Cooling(Outdoor)				45	43	44	50
	Heating(Outdoor)				45	41	42	49
Airflow	Cooling(Indoor)				342-301-262-173	342-310-270-174	388-345-300-182	408-355-293-173
	Heating(Indoor)				392-317-275-218	425-330-288-222	450-363-315-234	458-386-318-227
External dimensions (H×W×D)	Indoor				339x1197x262			
	Outdoor				750x880(+88)x340			
Net weight	Indoor				15.5			
	Outdoor				58			
Refrigerant piping	Liquid line				Ø6.35			
	Gas line				Ø12.70			
	Connection method				Flare connection			
	Quantity				1.6			
Refrigerant R32	Attached length of piping				Liquid line : 0.78 / Gas line : 0.71			
	Pre charged to pipe length				15			
	Additional charge				20			
	Maximum charge				1.975			
Standard accessories					Allergen Clear & Photocatalytic Washable Deodorizing Filter			
Optional parts					Interface kit (SC-BIKN2-E) / Wi-Fi Kit			
Outdoor air temperature (upper, lower limits)	Cooling mode (approximately)				-15 to +46			
	Heating mode (approximately)				-15 to +24			

PRODUCT SPECIFICATIONS

SRF-ZMXA SERIES

Refrigerant Pipe Length			
Model	SRF25ZMXA-S	SRF35ZMXA-S	SRF50ZMXA-S
Maximum pipe length	m	15	30
Maximum height difference	m	10	20



SRF50ZMXA-S



SRF35ZMXA-S

SRFZMXA-S	CAPACITY		2.5kW	3.5kW	5.0kW
Indoor			SRF25ZMXA-S	SRF35ZMXA-S	SRF50ZMXA-S
Outdoor			SRC25ZMXA-S	SRC35ZMXA-S	SRC50ZMXA-S
Power supply			1 Phase 220~240V/50Hz		
Capacity	Cooling T1		2.5 (0.9~3.2)	3.5 (0.9~4.1)	5.0 (1.1~5.2)
	Heating H1	kW	3.4 (0.9~4.7)	4.5 (0.9~5.1)	6.0 (0.6~6.9)
	Heating H2		3.55	3.92	5.91
Input	Cooling T1	kW	0.521 (0.19~0.82)	0.890 (0.19~1.26)	1.390 (0.20~1.70)
	Heating H1		0.723 (0.23~1.20)	1.124 (0.23~1.43)	1.540 (0.20~2.15)
Max running current		A	8	8	15
Energy label	Cooling	Stars	★★★★ (4)	★★★★ (2.5)	★★★★ (2.5)
	Heating		★★★★ (4)	★★★ (3)	★★★ (3)
EER	Cooling T1		4.80	3.93	3.60
COP	Heating H1		4.70	4.00	3.90
	Heating H2		3.17	2.96	3.03
Sound power level (JIS C9612)	Cooling(Outdoor)	dB (A)	60	63	63
	Heating(Outdoor)		60	62	62
Sound pressure level (JIS C9612)	Cooling(Indoor)	dB(A)	40-32-29-26	41-34-33-28	46-42-35-32
	Heating(Indoor)		40-35-33-28	41-36-35-31	47-41-39-33
Airflow	Cooling(Indoor)	l/s	150-126-111-96	153-130-121-106	192-160-123-110
	Heating(Indoor)		175-136-128-110	178-138-135-123	200-167-157-127
External dimensions (HXWXD)	Indoor	mm		600x860x238	
	Outdoor		595x780(+62)x290		640x800(+71)x290
Net weight	Indoor	kg	18		19
	Outdoor		38		45
Refrigerant piping	Liquid line	mm		Ø6.35	
	Gas line		Ø9.52		Ø12.7
Connection method	Connection method		Flare connection		
	Quantity	kg	1.2		1.5
Refrigerant R410A	Attached length of piping	m	15		
	Pre Charged To Pipe Length	m	Not Required		
	Additional charge	gr/m	1.2		20
	Maximum charge	kg	1.2		1.8
Standard accessories			Enzyme & Photocatalytic Washable Deodorizing Filter		
Optional part	Interface kit (SC-BIKN2-E) / Wi-Fi Kit				
	Cooling mode (approximately)	C	-15 to +46		
Outdoor air temperature (upper, lower limits)	Heating mode (approximately)	C	-15 to +24		

PRODUCT SPECIFICATIONS

SRK-ZMP SERIES



SRK17ZMP-S

Refrigerant Pipe Length		
Model	SRK17ZMP-S	15
Maximum pipe length	m	15
Maximum height difference	O.D above I.D	10
	O.D below I.D	10

SRKZMP-S	CAPACITY	1.7kW
Indoor		SRK17ZMP-S
Outdoor		SRC17ZMP-S
Power supply		1 Phase 220-240V 50Hz
Capacity	Cooling T1	1.7 (0.9-2.7)
	Heating H1	2.0 (0.8-3.8)
Input	Cooling T1	0.42 (0.25-0.94)
	Heating H1	0.465 (0.20-1.41)
Max running current		9
Energy label	Cooling T1	★★★★ (2.5)
	Heating H1	★★★★ (4)
EER	Cooling T1	4.05
COP	Heating H1	4.30
Sound power level (JIS C9612)	Cooling (Outdoor)	54
	Heating (Outdoor)	55
Sound pressure level (JIS C9612)	Cooling (Indoor)	45-34-23
	Heating (Indoor)	43-34-26
Airflow	Cooling (Indoor)	168-122-70
	Heating (Indoor)	158-122-87
External dimensions (HXWxD)	Indoor	262x769x210
	Outdoor	540x645x275
Net weight	Indoor	6.9
	Outdoor	2.5
Refrigerant piping	Liquid line	Ø6.35
	Gas line	Ø9.52
	Connection method	Flare connection
	Quantity	0.655
Refrigerant R410A	Attached length of piping	Liquid line : 0.39 / Gas line : 0.32
	Pre charged to pipe length	10
	Additional charge	20
	Maximum charge	0.755
Standard accessories		Allergen Clear & Photocatalytic Washable Deodorizing Filter
Optional parts		Interface kit (SC-BIKN2-E) / WiFi Kit
Outdoor air temperature (upper, lower limits)	Cooling mode (approximately)	-15 to +46
	Heating mode (approximately)	-15 to +24

SRR-ZM SERIES



SRR35ZM-S

Refrigerant Pipe Length		
Model	SRR35ZM-S	15
Maximum pipe length	m	15
Maximum height difference	O.D above I.D	10
	O.D below I.D	10

SRRZM-S	CAPACITY	2.5kW	3.5kW
Indoor		SRR25ZM-S	SRR35ZM-S
Outdoor		SRC25ZMXXA-S	SRC35ZMXXA-S
Power supply		1 Phase 220-240V 50Hz	
Capacity	Cooling T1	2.5 (1.0-3.3)	3.5 (1.0-3.9)
	Heating H1	3.4 (1.4-4.8)	4.2 (1.5-5.2)
Input	Cooling T1	0.57 (0.21-0.86)	0.98 (0.21-1.20)
	Heating H1	0.75 (0.26-1.32)	1.03 (0.260-1.47)
Max running current		8	
Energy label	Cooling	★★★★ (3.5)	★★★★ (2.5)
	Heating	★★★★ (4)	★★★★ (3.5)
EER	Cooling T1	4.39	3.57
COP	Heating H1	4.53	4.08
Sound power level (JIS C9612)	Cooling(Outdoor)	60	63
	Heating(Outdoor)	60	62
Sound pressure level (JIS C9612)	Cooling(Indoor)	37-33-30-24	38-34-31-25
	Heating(Indoor)	40-37-34-28	42-38-35-29
Airflow	Cooling(Indoor)	158-133-108-75	167-142-117-83
	Heating(Indoor)	167-150-133-100	175-158-142-108
External dimensions (HXWxD)	Indoor	200x750x500	
	Outdoor	595x780(+62)x290	
Net weight	Indoor	20.5	
	Outdoor	3.5	
Refrigerant piping	Liquid line	Ø6.35	
	Gas line	Ø9.52	
	Connection method	Flare connection	
	Quantity	1.2	
Refrigerant R410A	Pre Charged To Pipe Length	15	
	Additional charge	Not required	
	Maximum charge	1.2	
Standard accessories		Polypropylene net x1	
Optional parts		Interface kit (SC-BIKN2-E) / Wi-Fi Kit	
Outdoor air temperature (upper, lower limits)	Cooling mode (approximately)	-15 to +46	
	Heating mode (approximately)	-15 to +24	

Heat Pump Room Sizing Chart

A Class

Insulated roof space, walls and sub floor, full brick or brick veneer construction, average size windows with awnings, full shading south facing aspect, temperate weather conditions.

B Class

Insulated roof space, full brick or brick veneer construction, average size windows with internal shades, north facing aspect, temperate climate.

C Class

Insulated roof space, full brick or brick veneer construction, average size windows with internal shades, east facing aspect or sub tropical climate.

D Class

Little or no insulation, weatherboard, fibro or brick veneer construction, large windows, no shading from the sun westerly facing aspect.

Selection Chart for Cooling and Heating			Room Class			
Model	Capacity		A	B	C	D
			Maximum Floor Area (m ²)			
SRK17ZMP-S	1.7kW	Cooling	17	14	12	10
		Heating	20	17	15	12
Avanti PLUS® (SRK20ZSXA-W) Avanti® (SRK20ZSA-W)	2.0kW	Cooling	20	16	14	12
		Heating	27	23	20	16
Avanti PLUS® (SRK25ZSXA-W) Avanti (SRK25ZSA-W)	2.5kW	Cooling	25	21	18	15
		Heating	34	28	24	20
Avanti PLUS® (SRK35ZSXA-W) Avanti® (SRK35ZSA-W)	3.5kW	Cooling	35	29	25	21
		Heating	40	33	29	24
Avanti PLUS® (SRK50ZSXA-W) Avanti® (SRK50ZSA-S)	5.0kW	Cooling	51	43	36	30
		Heating	58	48	41	34
Avanti PLUS® (SRK60ZSXA-W)	6.0kW	Cooling	60	50	45	37
		Heating	68	57	48	39
Bronte® (SRK63ZRA-W)	6.3kW	Cooling	63	54	47	38
		Heating	71	58	50	42
Bronte® (SRK71ZRA-W)	7.1kW	Cooling	71	59	51	42
		Heating	80	67	57	47
Bronte® (SRK80ZRA-W)	8.0kW	Cooling	80	67	57	47
		Heating	89	73	64	52
Bronte® (SRK95ZRA-W)	9.5kW	Cooling	95	78	68	57
		Heating	105	87	76	60

* This guide has been developed to assist in model selection for the majority of normal residential air conditioning and heat pump situations and as per AS/NZS 3823 performance data. Mitsubishi Heavy Industries recommend a heat load survey should be conducted by a licensed installer.

NOTES

Date:	
Description:

00cm	01	02	03	04	05	06	07	08	09	10	11	12	13	14	15	16	17	18
01																		
02																		
03																		
04																		
05																		
06																		
07																		
08																		
09																		
10																		
11																		
12																		
13																		
14																		
15																		
16																		
17																		
18																		
19																		
20																		
21																		
22																		

SUPERIOR TECHNOLOGY THAT
OUTLASTS AND OUTPERFORMS

mhiaa.co.nz

G.S.T. 105-673-620

New Zealand:

Phone: **0800 138 007**

Auckland

698A Great South Road, Penrose, 1061

MOVE THE WORLD FORWARD  **RD MITSUBISHI
HEAVY
INDUSTRIES
GROUP**

